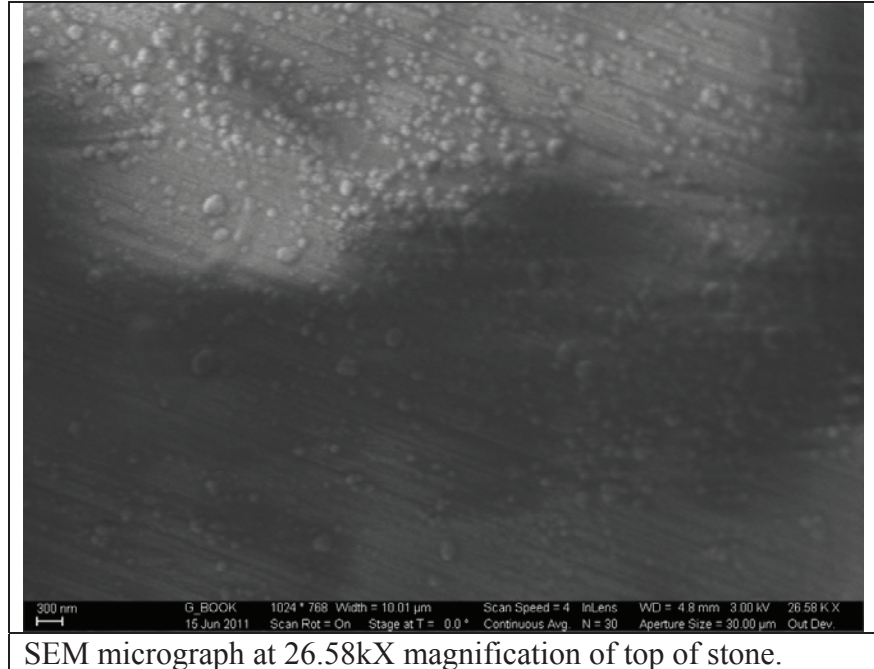


SEM micrograph at 4.41kX magnification of top of stone.



SEM micrograph at 26.58kX magnification of top of stone.



EDX Analysis of table top of stone. The carbon signal is likely coming from the bulk sample.

Standard:

C CaCO3 1-Jun-1999 12:00 AM  
O SiO2 1-Jun-1999 12:00 AM  
Al Al2O3 1-Jun-1999 12:00 AM

Element	App Conc.	Intensity Corr.	Weight%	Weight% Sigma	Atomic%
CK	0.27	1.8444	6.92	0.89	10.77
OK	3.06	2.7501	52.14	1.69	60.89
AlK	1.06	1.2033	40.94	1.74	28.35
Totals			100.00		

Results:

From the exterior of the gemstone, the only elements found via EDX testing are Carbon, Oxygen, and AL2O3 Corundum

